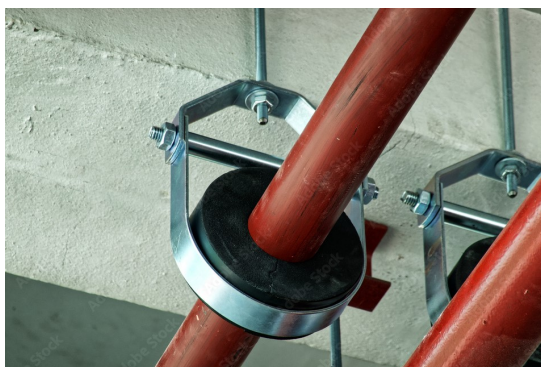


Pipe Installations Clamps



Applications

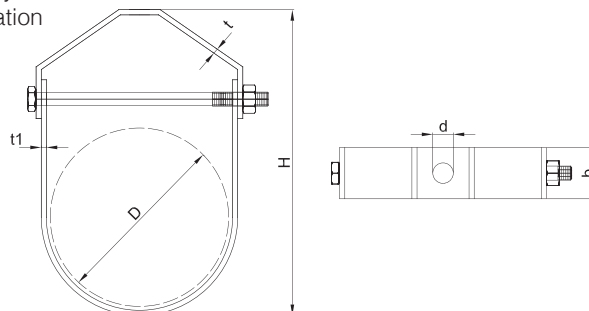
- Designed for chilled water pipe work and fire fighting systems
- Design permits vertical adjustment of pipe after installation

Advantages

- Heavy duty Clevis Hanger
- Nuts above Clevis must be tightened securely to ensure proper hanger performance.

Technical Data

Sprinkler Clamp



Item	Art number for GI	Pipe diameter D		Height H (mm)	Width W (mm)	Hole size d (mm)	Thickness t (mm)	Thickness t1 (mm)	Bolt size d (mm)	Max. Load (N)
		(inch)	(mm)							
SCH ½	3170022	½	22.0	70	25.0	10	3	3	M8 x 60 mm	4000
SCH ¾	3170028	¾	28.0	76	25.0	10	3	3	M8 x 68 mm	4000
SCH 1	3170035	1	35.0	82	25.0	10	3	3	M8 x 78 mm	4000
SCH 1¼	3170040	1¼	42.0	92	25.0	10	3	3	M8 x 82 mm	4000
SCH 1½	3170048	1½	48.0	100	25.0	10	3	3	M8 x 88 mm	4000
SCH 2	3170060	2	60.0	117	25.0	10	3	3	M10 x 110 mm	4000
SCH 2½	3170075	2½	73	146	25.0	10	4	4	M10 x 140 mm	6500
SCH 3	3170090	3	89.0	155	25.0	10	4	4	M10 x 155 mm	6500
SCH 4	3170115	4	115	198	32.0	10	6	6	M12 x 195 mm	8000
SCH 5	3170140	5	140.0	232	32.0	12	6	6	M12 x 225 mm	8000
SCH 6	3170168	6	168	266	40.0	12	5	6	M12 x 275 mm	11000
SCH 8	3170219	8	219.0	338	40.0	12	5	6	M16 x 360 mm	11000
SCH 10	3170273	10	273.0	419	40.0	16	6	6	M20 x 420 mm	11000
SCH 12	3170323	12	323	490	50.0	20	6	10	M20 x 455 mm	15000
SCH 14	3170355	14	355.0	556	50.0	20	6	10	M24 x 510 mm	15000
SCH 16	3170406	16	406	610	65.0	24	6	12	M24 x 555 mm	17500
SCH 18	3170457	18	457	675	65.0	24	6	12	M24 x 610 mm	17500
SCH 20	3170508	20	508.0	715	75.0	30	10	12	M24 x 710 mm	22000
SCH 24	3170610	24	610	850	75.0	30	10	16	M24 x 890 mm	27000
SCH 30	3170755	30	755	995	75.0	30	10	20	M10 x 125 mm	30000

Note:

Hot Dip Galvanized & Stainless Steel Finishes are available upon request

Properties

Material
Steel

Standards

Electro galvanized as per ASTM B 633
Designed to meet MSS Standard SP-58, type 1 and SP-69

Finish

Electro Zinc Plated GI /
Hot dip galvanized HDG /
Stainless Steel A4