

Pipe Installations Clamps



Properties

Density

1100 - 1600 kg/m³

Thermal Conductivity

0.16 W/m.k

Temperature Resistance

-20 °C to + 110 °C

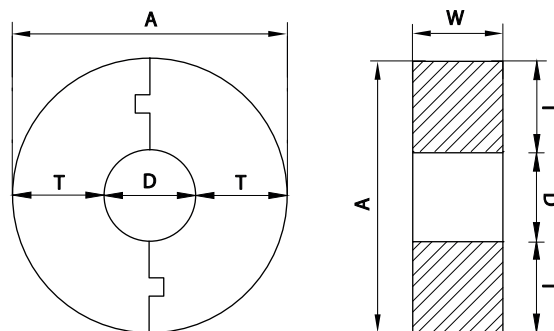
Features

- Used at the supporting points of insulated pipes to prevent crushing of insulation.

Advantages

- Very high load bearing capacity.
- Dimensionally accurate as piece is moulded.

Technical Data



Rubber Support Insert

Nominal Pipe Size		Pipe OD D (mm)	Width W (mm)	T = 1/2" (13mm)		T = 3/4" (19mm)		T = 1" (25mm)		T = 1 1/4" (32mm)	
(mm)	(inch)			Art Number	A (mm)	Art Number	A (mm)	Art Number	A (mm)	Art Number	A (mm)
1/2"	DN15	21.3	25	66121325	47	66121925	59	66122525	71	66123232	85
3/4"	DN20	26.7	25	66341325	53	66341925	65	66342525	77	66343232	91
1"	DN25	33.4	25	6611325	59	6611925	71	6612525	83	6613232	97
1 1/4"	DN32	42.1	25	661141325	68	661141925	80	661142525	92	661143232	106
1 1/2"	DN40	48.2	25	661121325	74	661121925	86	661122525	98	661123232	112
2"	DN50	60.3	25	6621325	86	6621925	98	6622525	110	6623232	124
2 1/2"	DN65	73.0	38	662121338	99	662121938	111	662122538	123	662123238	137
3"	DN80	88.9	38	6631338	115	6631938	127	6632538	139	6633238	153
4"	DN100	114.3	38	6641338	140	6641938	152	6642538	164	6643238	178
5"	DN125	141.3	38	6651338	167	6651938	179	6652538	191	6653238	205
6"	DN150	168.3	50	6661350	194	6661950	206	6662550	218	6663250	232
8"	DN200	219.1	50	6681350	245	6681950	257	6682550	269	6683250	283
10"	DN250	273.1	50	66101350	299	66101950	311	66102550	323	66103250	337
12"	DN300	323.8	50	66121350	350	66121950	362	66122550	374	66123250	388
14"	DN350	355.6	50	66141350	382	66141950	394	66142550	406	66143250	420
16"	DN400	406.4	50	66161350	432	66161950	444	66162550	456	66163250	470
18"	DN450	457.2	50	66181350	483	66181950	495	66182550	507	66183250	521
20"	DN500	508.0	50	66201350	534	66201950	546	66202550	558	66203250	572
24"	DN600	609.6	50	66241350	636	66241950	648	66242550	660	66243250	674

Pipe Installations Clamps



Properties

Density

1100 - 1600 kg/m³

Thermal Conductivity

0.16 W/m.k

Temperature Resistance

-20 °C to + 110 °C

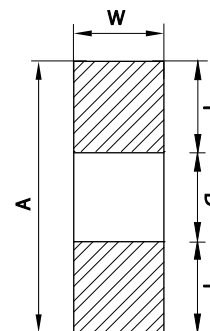
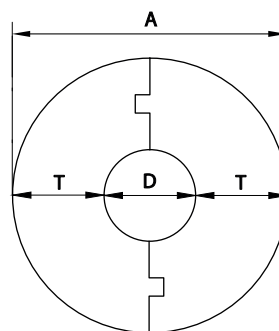
Features

- Used at the supporting points of insulated pipes to prevent crushing of insulation.

Advantages

- Very high load bearing capacity.
- Dimensionally accurate as piece is moulded.

Technical Data



Rubber Support Insert

Nominal Pipe Size		Pipe OD D (mm)	Width W (mm)	T = 1 1/2" (38mm)		T = 2" (50mm)		T = 3" (75mm)	
(mm)	(inch)			Art Number	A (mm)	Art Number	A (mm)	Art Number	A (mm)
1/2"	DN15	21.3	25	66123825	97	66125025	121	-	-
3/4"	DN20	26.7	25	66343825	103	66345025	127	66347525	177
1"	DN25	33.4	25	6613825	109	6615025	133	6617525	183
1 1/4"	DN32	42.1	25	661143825	118	661145025	142	661147525	192
1 1/2"	DN40	48.2	25	661123825	124	661125025	148	661127525	198
2"	DN50	60.3	25	6623825	136	6625025	160	6627525	210
2 1/2"	DN65	73.0	38	662123838	149	662125038	173	662127538	223
3"	DN80	88.9	38	6633838	165	6635038	189	6637538	239
4"	DN100	114.3	38	6643838	190	6645038	214	6647538	264
5"	DN125	141.3	38	6653838	217	6655038	241	6657538	291
6"	DN150	168.3	50	6663850	244	6665050	268	6667575	318
8"	DN200	219.1	50	6683850	295	6685050	319	6687575	369
10"	DN250	273.1	50	66103850	349	66105050	373	66107575	423
12"	DN300	323.8	50	66123850	400	66125050	424	66127575	474
14"	DN350	355.6	50	66143850	432	66145050	456	66147575	506
16"	DN400	406.4	50	66163850	482	66165050	506	66167575	556
18"	DN450	457.2	50	66183850	533	66185050	557	66187575	607
20"	DN500	508.0	50	66203850	584	66205050	608	66207575	658
24"	DN600	609.6	50	66243850	686	66245050	710	66247575	760