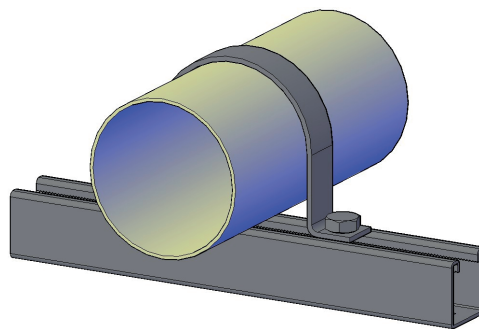


Pipe Installations Clamps



Properties

Material

Steel

Property Class

S275JR

Finish

Electro Galvanized /
Hot dip galvanized /
Stainless Steel A4

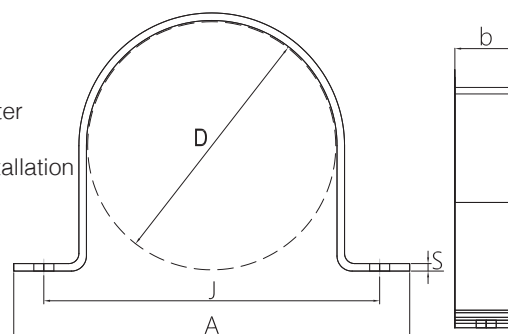
Features

- Electrogalvanized as per ASTM B 633 Standards
- Designed to meet MSS Standard SP-58, Type 26 and SP-69

Advantages

- U-Profiles for easy horizontal and vertical pipe installations
- U-Strap's two screws allow for ideal adaptation to suit the outer pipe diameter
- U-Strap with Channel support acts as a guide support
- U-Strap with Rubber Insert support can be used for Chilled water pipes installation

Technical Data



Electro Zinc Plated U-Strap

Item	Art number for GI	Pipe Outer Dia. (mm)	Pipe Size (inch)	Bolt Size M	S X b (mm)	J (mm)	A (mm)
SUS 1/2"	2125022	22	1/2"	M 8	2 x 25	54	32
SUS 3/4"	2125028	28	3/4"	M 8	2 x 25	60	38
SUS 1"	2125035	35	1"	M 8	2 x 25	66	45
SUS 1 1/4"	2125042	42	1 1/4"	M 8	2 x 25	75	53
SUS 1 1/2"	2125048	48	1 1/2"	M 8	2 x 25	81	60
SUS 54mm	2125054	54	54mm	M 8	2 x 25	92	119
SUS 2"	2125060	60	2"	M 8	2 x 25	98	125
SUS 67mm	2125067	67	67mm	M 8	2 x 25	105	132
SUS 2 1/2"	2125075	75	2 1/2"	M 8	3 x 25	136	172
SUS 82mm	2125082	82	82mm	M 8	3 x 25	144	180
SUS 3"	2125090	90	3"	M 8	3 x 25	152	188
SUS 100mm	2125100	100	100mm	M 8	3 x 25	162	198
SUS 108mm	2125108	108	108mm	M 8	3 x 25	170	206
SUS 4"	2125115	115	4"	M 8	3 x 25	178	214
SUS 126mm	2125126	126	126mm	M 10	3 x 25	186	222
SUS 140mm	2125140	140	140mm	M 10	3 x 25	201	237
SUS 148mm	2125148	148	148mm	M 10	3 x 25	208	244
SUS 155mm	2125155	155	155mm	M 10	3 x 25	216	252
SUS 6"	2125168	168	6"	M 10	3 x 25	228	264
SUS 179mm	2125179	179	179mm	M 10	3 x 25	239	275
SUS 190mm	2125190	190	190mm	M 10	3 x 28	251	287
SUS 205mm	2125205	205	205mm	M 10	3 x 28	265	301
SUS 8"	2125219	219	8"	M 10	3 x 28	278	314
SUS 230mm	2125230	230	230mm	M 10	3 x 28	292	328

Note:

Hot Dip Galvanized & Stainless Steel Finishes are available upon request

Sizes of U Strap can be modified to be used with rubber insert supports.

Selection is prepared for standard steel pipe sizes only, U Strap sizes can be selected for different pipe sizes upon request.